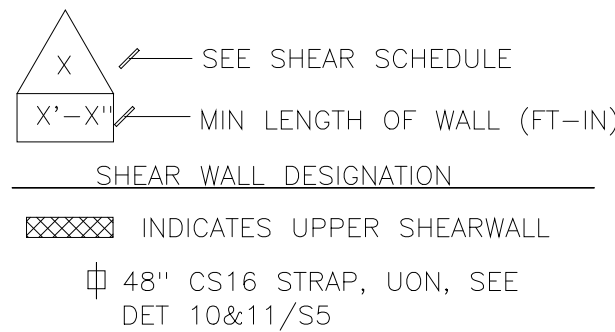


CEILING JOIST SCHEDULE

DL = 5.0 PSF, LL = 10 PSF  
TOP OF JOIST TO BE BRACED MIDSPAN  
USE LUS HANGER FOR JOIST SIZE (2X6, USE LUS26)

SIZE	MAX SPAN
2X4 DF#2 @ 24	8'-0"
2X6 DF#2 @ 24	12'-0"
2X8 DF#2 @ 24	18'-0"
2-2X8 DF#2 @ 16	20'-0"



FLOOR BEAM TABLE

SIZES SHOWN ARE MINIMUM		CONNECTION	
		LEFT	RIGHT
F-1	3 1/2 X 11 7/8 LVL (1.8E)	A34 EA SIDE	A34 EA SIDE
F-2	5 1/4 X 11 7/8 LVL (1.8E)	HB5.50/11.88	A34 EA SIDE
F-3	4X8 DF2	n/a	A34 EA SIDE
F-4	1 3/4 X 11 7/8 LSL RIM	A34 ONE SIDE	A34 ONE SIDE
F-5	1 3/4 X 11 7/8 LSL RIM	HUS1.81/10	A34 ONE SIDE
F-6	W8X67 STEEL BEAM	DTL X/SX	DTL X/SX
F-7	4X12 DF2	EPC44	ITS1.81/11.88
F-8	4X12 DF2	EPC44	BA412
F-9	3 1/2 X 11 7/8 LVL (1.8E)	EPC44	
F-10	4X10 DF2	HU410	HU410
F-11	3 1/2 X 9 1/2 LVL (1.8E)	HU410	n/a
F-12	3 1/2 X 11 7/8 LVL (1.8E)	EPC44	EPC44
F-13	3 1/2 X 11 7/8 LVL (1.8E)	n/a	EPC44
F-14	4X10 DF2	HUS410	EPC44
F-15	5 1/4 X 9 1/2 LVL (1.8E)	A34 EA SIDE	A34 EA SIDE
F-16	4X10 DF2	HU410	EPC44
F-17	4X12 DF2	A34 EA SIDE	hanger
F-18	NO BEAM F-18		
F-19	4X12 DF2	A34 EA SIDE	EPC44

HEADER BEAM TABLE

SIZES SHOWN ARE MINIMUM	
HDR BM 1	3 1/2 X 11 7/8 LVL (1.8E)
HDR BM 2	4X8 DF2
HDR BM 3	3 1/2 X 11 7/8 LVL (1.8E)

ALL FLOOR JOIST ARE TO BE 11 7/8" TJI 230 @ 16" O.C.,  
WQN FLOOR JOIST HANGERS ARE TO BE ITS2.37/11.88, UON

ROOF BEAM TABLE

SIZES SHOWN ARE MINIMUM		CONNECTION	
		LEFT	RIGHT
R-1	4X8 DF2	LUS48	EPC44
R-2	4X8 DF2	LUS48	EPC44
R-3	4X12 DF2	EPC44	EPC44
R-4	4X10 DF2	A34 EA SIDE	A34 EA SIDE
R-5	4X10 DF2	EPC44	EPC44
R-6	4X12 DF2	EPC44	EPC44
R-7	4X8 DF2	EPC44	EPC44

2X ROOF BRACE TO BEAM OR POST  
BELOW, SEE SHT S7

KEYNOTES

- 48" CS14 STRAPS, SEE DTL 12/S6
- CS14 STRAP OVER PLYWD AND ADD'L RAFTER OR BLKG, L= LENGTH (FEET)
- 48" CS16 STRAP, SEE DTL 16/S6
- 48" CS14 STRAP OVER PLYWD AND RAFTER OR BLKG
- CS14 STRAP OVER PLYWD AND ADD'L FLR JTS OR 2X BLKG, L= LENGTH (FEET)
- 68" CMST14 STRAP, BM TO WALL, OVER PLYWD & BLKG
- POST OR STUD FROM ABOVE
- STEEL BEAM, SEE DTL 9/S5

NOTES

- ALL FRAMING SHALL BE INSTALLED IN COMPLIANCE WITH 2007 CBC REQUIREMENTS.
- SEE SHEETS S1 AND S7 FOR TYPICAL DETAILS AND BEARING WALL DETAILS AND NOTES NOT SHOWN HERE.
- ALL 4X OR BEAMS SHALL BEAR ON 4X POSTS MIN. UON. X5 DENOTES NUMBER OF STUDS (EX: 25 IS TWO STUDS FACE NAILED TOGETHER).
- ALL POSTS ARE 4X4 DF#2 MIN. TYP UON.
- ALL POST CAPS ARE PC OR EPC POST CAPS, TYP UON.
- ALL SOLID SAWN BEAMS ARE DOUGLAS FIR #2, UON.
- ALL BEAMS AND HEADERS SHALL BE SUPPORTED WITH FULL BEARING. USE #2 DF-L SUPPORTS, UON.
- BEAM SIZES NOTED ARE MINIMUM. LARGER MEMBERS MAY BE USED, SIZE HARDWARE CORRESPONDINGLY.
- ALL DOUBLE TOP PLATES OF BEARING WALLS SHALL BE #2 DF-L. FOR DESIGNATED SHEAR WALL LINES, LAP SPICES SHALL BE 48" W/24-160 OR MST48 STRAP, UON.
- ALL HARDWARE SHALL BE SIMPSON STRONG-TIE AND SHALL BE IN PLACE PRIOR TO FOUNDATION INSPECTION. SEE DETAIL 9/5-1 FOR HOLDOWN INSTALLATION DETAIL.
- ALL LUMBER USED @ EXTERIOR APPLICATIONS OR EXPOSED TO THE ELEMENTS SHALL BE PRESSURE TREATED DOUG FIR #2 OR REDWOOD #2, OR PAINTED W/ A WOOD PRESERVING PAINT.
- SHEATH ALL NEW EXTERIOR WALLS W/ 3/8" OSB W/ 8D @ 6"OC EDGE AND 12"OC FIELD NAILING. SEE SHEAR WALL AND BRACED WALL SCHEDULES FOR ADDITIONAL REQUIREMENTS.
- FLOOR JOISTS SPACING SHALL BE 16"OC MAX., UON. SIZES AS NOTED ON PLAN.
- ALL FASTENERS EXPOSED TO THE ELEMENTS SHALL BE OF A CORROSION RESISTANCE TYPE.



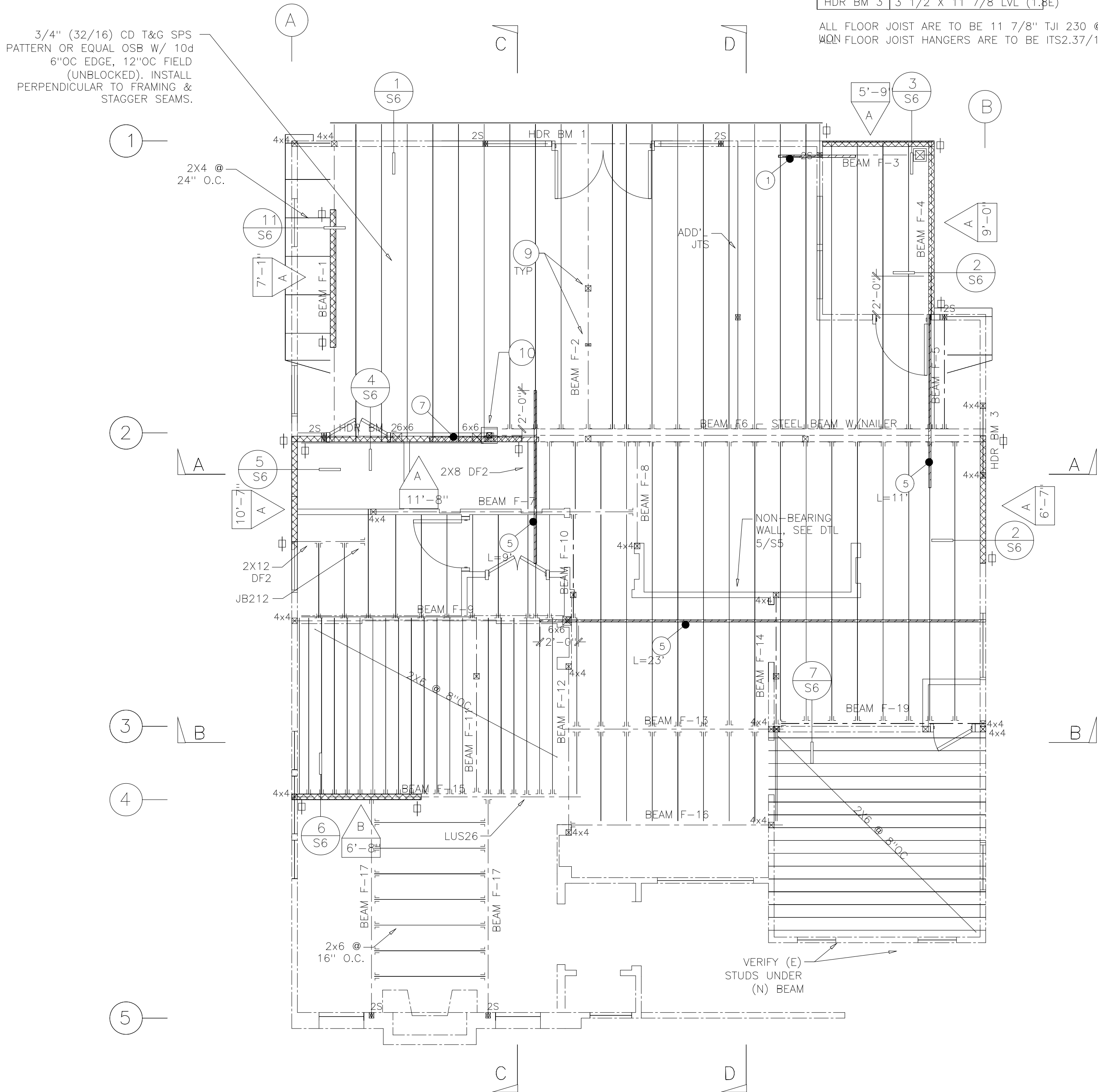
NEWTON CONSULTING INC.  
459 BENTON COURT  
FOLSOM, CALIFORNIA 95630  
916-765-4381

THESE PLANS ARE PROPERTY OF NEWTON CONSULTING, INC. FOR THE EXPRESS USE ON THIS PROJECT. ANY REPRODUCTION OR USE OF THIS DRAWING OR ANY OF ITS DETAILS WITHOUT WRITTEN CONSENT OF NEWTON CONSULTING, INC. IS A VIOLATION OF COPYRIGHT LAW AND THE VIOLATOR MAY BE SUBJECT TO PROSECUTION IN A COURT OF LAW.

Sheet Title:  
2ND FLOOR/UPPER SHEAR & ROOF PLANS

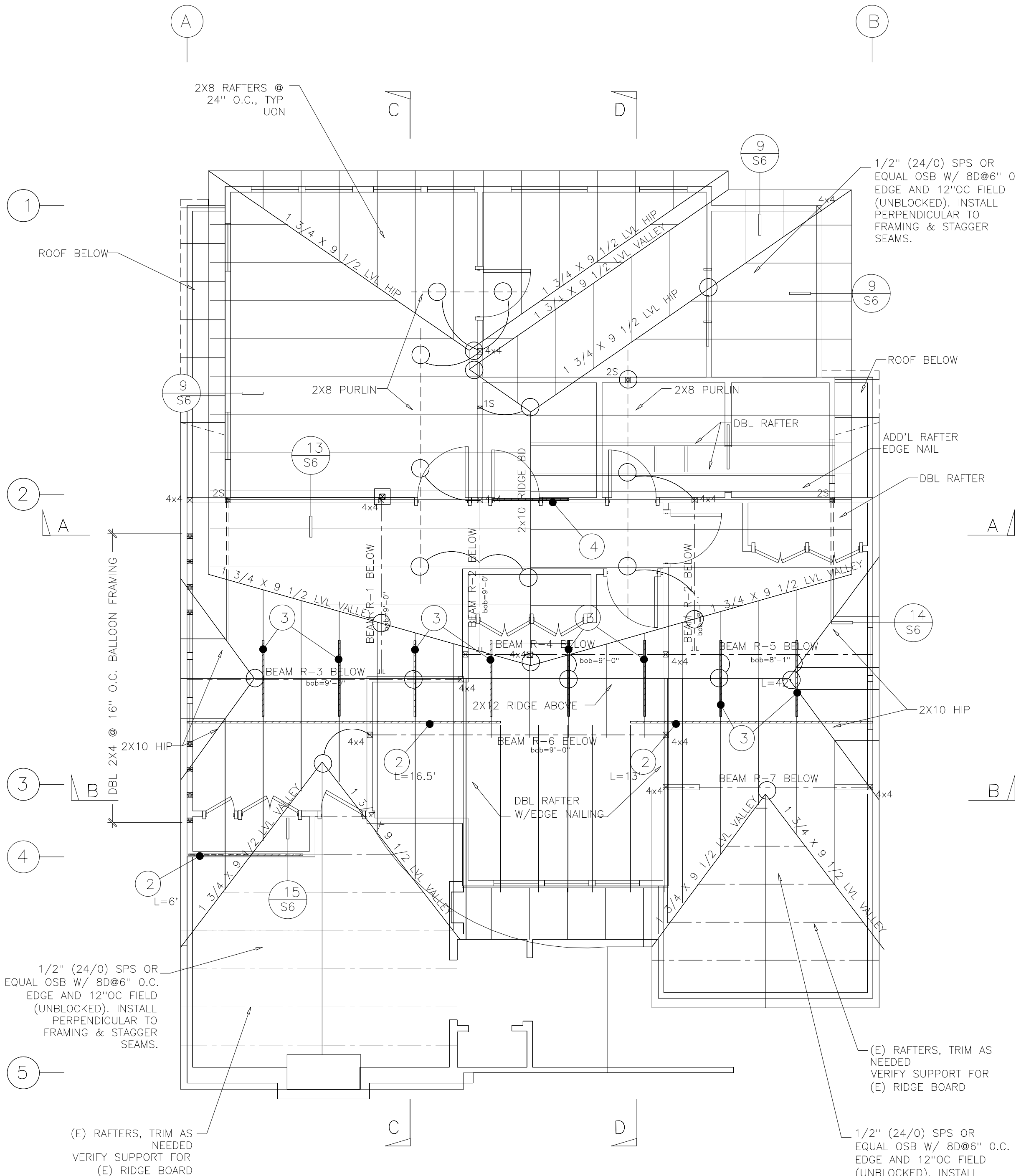
REVISIONS	BY	REVISIONS	BY

Plan No.:	Job: 09-001	Sheet No.:
Date: 3/5/09	Dr: BJN	S3
	Sc: AS NOTED	



2nd FLOOR FRAMING/UPPER SHEAR PLAN

1/4" = 1'-0"



ROOF FRAMING PLAN

1/4" = 1'-0"